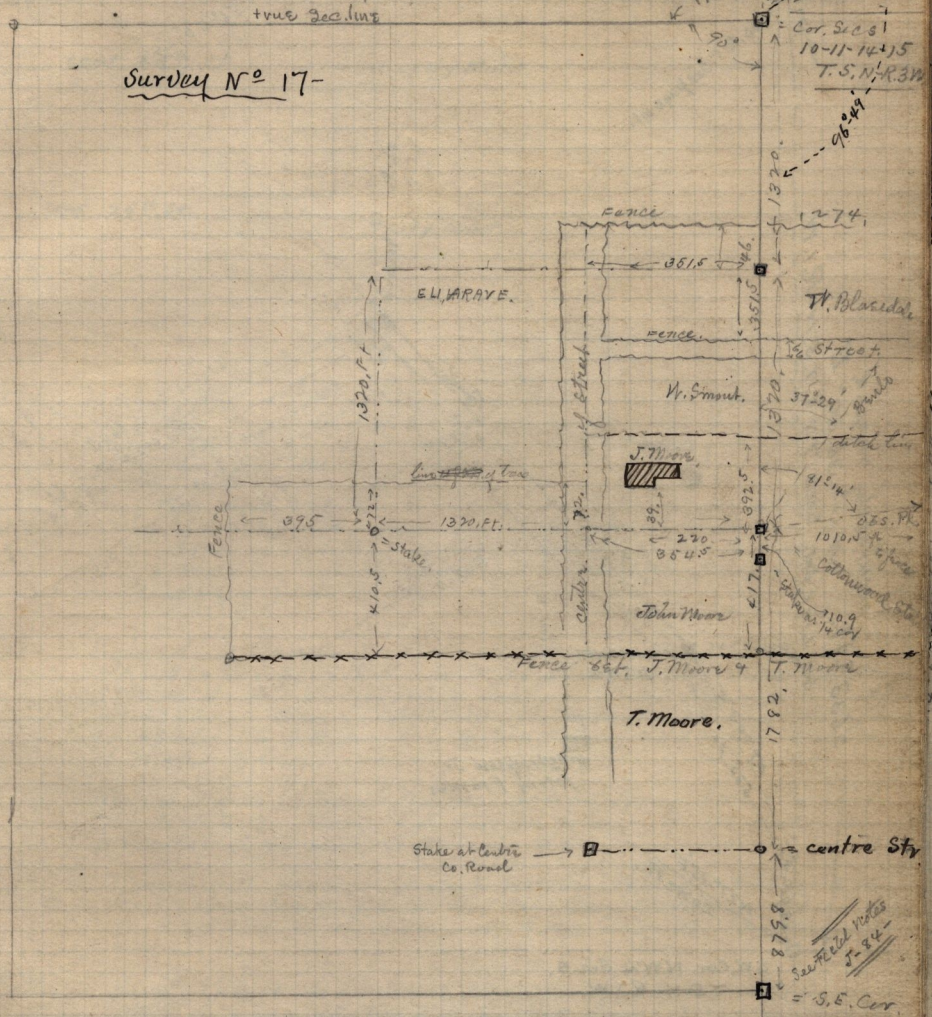


See Book D
p. 63

Feb. 25 - 1896.
Survey for John Moore at Hooper vi. Sec. 15 E
T. 5. N. - R. 3. W.



Copy, Deed from heirs of James Moore to John Moore.
Feb. 6 - 1889
Prsq. 306 chs W. 1/4 N. E. cor. S 1/2 of N. W. 1/4 sec. 14, T. 5. N. R. 3. W.
S 1/2 W 2.97 ch. D 789 1/2 W 20.67 ch. S 1/2 W. 2.90 789 1/2 W 2.12
N 1/2 E. 5.77 to N. line 1/4 of said 1/4 E. 22.79 to leg. 7.37-a
also prsq. S. W. Gr. rd 1/4 Sec. 15, N. 6.08 chs. S 89 1/2 E. 14.24
S 0° 30' W 2.25 ch. S 89 1/4 E 2.02 ch. S 1/4 W. 3.73 to S. line
1/4 Sec. W. 16.19 ch. to leg 9.37 a. not recorded Feb. 25-11-96